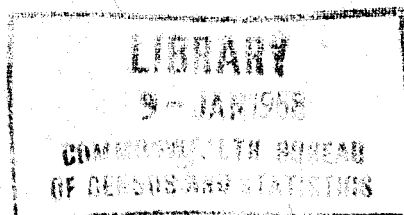


COMMONWEALTH BUREAU OF CENSUS AND STATISTICS,
CANBERRA, AUSTRALIA.

CENSUS OF MOTOR VEHICLES.

31st DECEMBER, 1955.

No. 4: SOUTH AUSTRALIA.



PREPARED UNDER INSTRUCTIONS FROM
THE RIGHT HONORABLE THE TREASURER.

BY

S. R. CARVER,
COMMONWEALTH STATISTICIAN.

COMMONWEALTH BUREAU OF CENSUS AND STATISTICS,
CANBERRA, AUSTRALIA.

CENSUS OF MOTOR VEHICLES.

31st DECEMBER, 1955.

No. 4: SOUTH AUSTRALIA.

PREPARED UNDER INSTRUCTIONS FROM
THE RIGHT HONORABLE THE TREASURER.

BY

S. R. CARVER,
COMMONWEALTH STATISTICIAN.

CENSUS OF MOTOR VEHICLES.

31st DECEMBER, 1955.

No. 4: SOUTH AUSTRALIA.

PREFACE.

This Bulletin contains particulars of motor vehicles on the register in South Australia at 31st December, 1955. It is one of a series of Bulletins which are being issued for each State of Australia, for the Northern Territory and the Australian Capital Territory and for Australia as a whole.

The statistics herein have been derived from particulars of motor vehicle registrations made available uniformly in all States and Territories. Figures shown relate to motor vehicles whose registrations were renewed during the year plus registrations of new vehicles and re-registrations of previously registered vehicles less registrations cancelled during the year.

Vehicles have been allocated to Local Government Areas according to the addresses of the owners shown on the registration certificates, but the vehicles themselves are not necessarily located or generally used in such areas.

Vehicles owned by the Commonwealth Government, other than Defence Service vehicles, have been included in all tables.

All figures for horsepower are in terms of R.A.C. rating. Whole numbers only have been shown. For example, an R.A.C. rating of 17.9 h.p. is recorded in this Bulletin as 17 h.p.

The following vehicles have been included in each type—

Cars—

Sedan: Calèche Coupe Limousine Saloon Sedan Sedan Coupe Sports Sedan.

Open Car: Convertible Open Sports Roadster Tourer.

Other: Ambulance Hearse.

Station Wagons—Estate Car Station Coupe Station Wagon.

Omnibuses—Coach Omnibus Parlour Coach Trolley Bus.

Utilities—Buckboard Coupe Utility Pick-up Utility.

Vehicles such as the Land Rover, Willys Jeep and Austin Champ are included under the heading of the body type constructed on the chassis, but in most cases such vehicles are classified as "utility".

Panel Van is defined as a "van body moulded in one unit with the cab integral".

Lorries—

Platform: Lorry Platform Truck Tray Tray Top and Sides Truck.

Van: Closed Van Furniture Van Horse Float Meat Wagon Pantehnicon Refrigerated Van.

Tipper: Dump Truck Tipper.

Articulated or Semi-Trailer: Articulated Truck Lorry Type Tractor Low Loader Prime Mover Semi-Trailer.

Other: Amphibious Truck Bolster Truck Log and Winch Truck Sanitary Wagon Scout Car Skeleton Wood Cart Timber Jinker Wood Chassis.

Other Commercial Vehicles—Concrete Agitator Fire Engine Milk Wagon Mobile Winch Petrol Wagon Spray Wagon Straddle Truck Street Flusher Street Sweeper Tanker Tow Truck Tower Wagon.

Motor Cycles—Motor Cycle Motor Scooter Pedal Cycle with motor attached.

The following vehicles have been excluded—Bulldozer, Crawler Tractor, Fork/Air Lift, Front End Loader, Grader, Industrial Barrow, Mobile Crane, Overloader, Rotary Hoe, Tractor, Trailers and vehicles without motive power (e.g., concrete mixers, air compressors and the like.)

S. R. CARVER,
Commonwealth Statistician.

Commonwealth Bureau of Census and Statistics,
Canberra, A.C.T., 14th March, 1957.

CENSUS OF MOTOR VEHICLES.

31st DECEMBER, 1955.

No. 4: SOUTH AUSTRALIA.

CONTENTS.

NUMBER OF TABLE.	PAGE.
1 Summary of Motor Vehicles on the Register at 31st December, 1955	1
2 Type of Vehicle according to Make, Horsepower (R.A.C.) and Year of Model:	
(i) Cars	2
(ii) Station Wagons	11
(iii) Utilities	13
(iv) Panel Vans	18
(v) Lorries	21
3 Make of Vehicle according to Type and Horsepower (R.A.C.) ..	27
4 Lorries: Carrying Capacity according to Make and Body Construction	40
5 Lorries: Unladen Weight according to Make and Body Construction	44
6 Diesel-powered Commercial Vehicles according to Make and Horsepower (R.A.C.)	48
7 Motor Cycles according to Make	50
8 Distribution of Vehicles according to Local Government Area and Statistical Division	51
Index of Local Government Areas.. .. .	54

*No. 1—SUMMARY OF MOTOR VEHICLES ON THE REGISTER AT 31st DECEMBER, 1955,
SOUTH AUSTRALIA.*

Type of Vehicle	Number of Vehicles
Cars—	
Sedan	127,582
Open	21,432
Other	148
Total Cars	149,162
Station Wagons	1,344
Omnibuses	973
Utilities	33,837
Panel Vans	5,256
Lorries—	
Platform	24,561
Van	480
Tipper	3,150
Articulated or Semi-Trailer	1,340
Other	134
Total Lorries	29,665
Other Commercial Vehicles	462
All Motor Vehicles (excluding Motor Cycles)	220,699
Motor Cycles	23,704

No. 2—TYPE OF VEHICLE ACCORDING TO MAKE, HORSEPOWER (R.A.C.), AND YEAR OF MODEL, SOUTH AUSTRALIA—continued.
(i) CARS—continued.

Make of Vehicle	Horse-power (R.A.C.)	Year of Model											Total	Percentage of Total Cars				
		Prior to 1930	1930-34	1935-39	1940-45	1946	1947	1948	1949	1950	1951	1952			1953	1954	1955	Not Stated
Chrysler—continued	29	2	3	2	..
	31	2	2	5	..
	33	..	32	34	..
Total Chrysler	..	524	192	226	16	1	3	5	1	2	980	0.7
Citroen ..	4	1	..
	7	15	15	..
	11	6	4	2	12	..
	12	18	3	1	23	..
	13	..	7	1	8	..
	15	76	..
	19	..	1	1	..
	20	..	1	1	..
	22	39	16	4	18	..
Total Citroen	..	1	..	11	12	..
Daimler ..	15	3	2	35	..
	16	1	..
	18	6	..
	20	5	..
	21	6	..
	25	5	..
	35	1	..
Total Daimler	..	1	1	15	2	2	3	2	2	7	9	9	5	4	63	0.1
De Soto ..	21	43	70	44	17	113	..
	23	..	12	4	61	..
	25	..	4	4	67	..
	26	..	3	129	4	4	..
	27	527	..
	28	131	..
Total De Soto	..	43	89	177	21	4	43	68	36	52	23	24	82	85	527	..
Dodge ..	21	1	1	396	105	1,235	..
	23	558	141	723	58	1,002	..
	25	27	68	12	..
	26	2	10	7	9	1,306	..
	27	176	182	222	..
	28	1	..
	37	35	..
Total Dodge	..	764	402	1,126	172	26	72	119	47	150	90	97	182	196	1,306	..
Durant ..	18	437	69	222	..
	19	15	14	1	..
	23	7	5	43	..
	25	1	2	26	..
	27	29	..
	27	462	90	7	..
	16	56	61	4	..
Total Durant	..	18	18	578	0.4
Erskine ..	18	79	..
Total Erskine	..	117	18	135	0.1

No. 2—TYPE OF VEHICLE ACCORDING TO MAKE, HORSEPOWER (R.A.C.), AND YEAR OF MODEL, SOUTH AUSTRALIA—continued.

(i) CARS—continued.

Make of Vehicle	Horse-power (R.A.C.)	Year of Model													Total	Percentage of Total Cars			
		Prior to 1930	1930-34	1935-39	1940-45	1946	1947	1948	1949	1950	1951	1952	1953	1954			1955	Not Stated	
Essex	17	896																896	
	18	202	204															409	3
Total Essex	20	4																15	
	27	1	4															5	
Fiat	6	1,103	219															1,325	3
	8	70	10	23	19	2												351	
Total Fiat	10	286	24	11														93	
	11	2	2															341	2
Ford	13																	244	
	16																	4	
Total Ford	17	1	1															147	
	19	6	33	1														2	
Total Ford & Graham-Paige	20	1																40	
	25	366	3	35	19	4												3	
Total Hillman	7																	1,226	
	10																	719	
Total Hillman ...	15	113	10	1,064	430	95												7,541	
	22	539	279	2,339	296	108												2,940	
Total Hillman ...	23	352	352	154	95	68												113	
	24																	3,850	
Total Hillman ...	30																	829	
	32																	3,787	
Total Hillman ...	36																	3,959	
	39																	15	
Total Hillman ...	42																	509	
	46																	2	
Total Hillman ...	Not Stated	652	662	3,623	866	315	522	956	1,212	1,879	1,945	2,489	2,633	3,254	3,238		3	24,263	16.3
	19	14	33	78														14	
Total Hillman ...	21	15	12	11														126	
	23	3	25	4														15	
Total Hillman ...	25	2	2	2														38	
	29		5	2														2	
Total Hillman ...	31		2															9	
	36		2															2	
Total Hillman ...	9	34	79	93	68	126	266	599	292	728	641	877	406	697	93		206	0.1	
	10	2	48	653	4				201	201							2,053		
Total Hillman ...	12	12	2	15													3,645		
	13																14		
Total Hillman ...	14																19		
	19		1	37													503		
Total Hillman ...	20	14	70	705	72	126	266	599	493	728	641	877	406	697	506		56		
																	6,291	4.2	

No. 2—TYPE OF VEHICLE ACCORDING TO MAKE, HORSEPOWER (R.A.C.), AND YEAR OF MODEL, SOUTH AUSTRALIA—continued.

(i) CARS—continued.

Make of Vehicle	Horse-power (R.A.C.)	Year of Model													Total	Percentage of Total Cars		
		Prior to 1930	1930-34	1935-39	1940-45	1946	1947	1948	1949	1950	1951	1952	1953	1954			1955	Not Stated
Total Holden Hudson	21	..	88	465	37	8	35	22	840	2,105	2,226	2,598	3,450	4,907	5,161	..	21,309	14.3
	21	1	3	20	2	2	1	656	..
	24	..	6	48	3	3	4	..
	28	40	67	..
Total Hudson Humber	29	..	3	23	19	48	10	16	6	1	44	..
	30	127	..
	34	7	..
	Not Stated	1	..
Total Humber Hupmobile	7	41	513	40	11	38	22	9	23	23	19	49	70	16	13	2	906	0.6
	8	1	1	..
	10	1	6	..
	11	5	1	213	1	..
Total Humber Hupmobile	13	3	23	106	350	..
	15	2	2	..
	16	..	1	1	1	184	89	153	130	..	788	..
	20	..	1	1	1	13	..
Total Humber Hupmobile	23	..	4	10	2	26	61	260	141	136	68	87	3	100	38	..	709	..
	26	..	7	235	..
	29	2	2	366	354	367	252	179	253	168	..	2,107	1.4	
	..	13	27	3	2	29	84	36	..
Total Hupmobile Jaguar	16	36	26	..
	23	1	44	..
	25	30	2	..
	26	2	2	..
Total Jaguar Jowett	27	..	1	3	..
	28	..	3	8	..
	29	..	1	14	15	..
	32	..	1	2	..
Total Hupmobile Jaguar	39	82	16	1	..
	137	0.1
	13	2	1	12	24	2	41	..
	19	..	9	1	1	2	29	8	28	78	..
Total Jaguar Jowett	25	..	3	1	1	2	34	34	140	207	70	77	77	72	55	..	695	..
	12	4	2	16	87	44	168	207	70	814	0.5
	..	1	2	..
	7	1	1	..
Total Jowett M.G.	10	..	1	387	..
	13	7	1	1	2	81	136	136	24	24	7	1	391	0.3
	8	4	4	8	..
	10	..	13	5	4	30	62	136	58	41	24	7	61	12	8	..	453	..
Total M.G.	12	..	3	13	..
	13	57	..
	17	..	3	3	..
	..	6	23	5	4	30	62	136	58	41	24	7	64	74	534	0.4

No. 2--TYPE OF VEHICLE ACCORDING TO MAKE, HORSEPOWER (R.A.C.), AND YEAR OF MODEL, SOUTH AUSTRALIA--continued.
(i) CARS--continued.

Make of Vehicle	Horse-power (R.A.C.)	Year of Model												Total	Percentage of Total Cars				
		Prior to 1930	1930-34	1935-39	1940-45	1946	1947	1948	1949	1950	1951	1952	1953			1954	1955	Not Stated	
Mercedes Benz	12			1													1		
	13																68		
	23																64		
Total Mercedes Benz	8			1													133		
Morris	10	16	92	1,033	260	66	264	669	335	1,047	890	1,080	729	699	1,061	5	8,246		
	11	299	69	79	94	29	144	321	14	9	1					7	759		
	12		5	29	25				2	1							429		
	13	123	69		1		2	10	444	626	725	732	229	289	431	4	3,685		
	14	4	53	117	4	1	1				2			3		1	179		
	15	1	18	7	1												36		
	17		18	3													21		
	19			6													6		
	20								104	198	76	10					388		
	22		2														2		
	23																2		
	24			2													2		
	25		5	68													73		
Total Morris	Not Stated	443	354	1,415	385	96	411	1,000	899	1,881	1,694	1,822	958	991	1,496	2	13,864		
Nash	21	26				27	42	33	6	2	7	8	8	3	4		27		
	23	88	37		4												269		
	25	17	19	52		18	19	14	2	1	2						88		
	27	1	12	92	19												180		
	28	20	4		1												24		
	31			3													4		
	33		5														5		
	36		2														3		
Total Nash	18	152	79	148	24	45	62	47	8	3	9	8	8	3	4		600		
Oakland	19	12															12		
	25	40															102		
	27	22	10														41		
	37		4														32		
Total Oakland	176	176	15														191		
Oldsmobile	18	111															111		
	19	80															80		
	24	48															68		
	26	1															424		
	28		378														504		
	29		408		86	1	64	3	2	18	3					1	236		
	30			2	11	45	2	76	19	1	1						8		
	33			16		1											16		
	45																2		
Total Oldsmobile		240	67	805	97	47	66	79	22	79	6					1	1,449		1.0

No. 2—TYPE OF VEHICLE ACCORDING TO MAKE, HORSEPOWER (R.A.C.), AND YEAR OF MODEL, SOUTH AUSTRALIA—continued.
(i) CARS—continued.

Make of Vehicle	Horse-power (R.A.C.)	Year of Model												Total	Percentage of Total Cars	
		Prior to 1930	1930-34	1935-39	1940-45	1946	1947	1948	1949	1950	1951	1952	1953			1954
Singer ..	7	33	22	233	8	32	27	80	197	82	28	8	2	56	1	7.4
	8	..	41	150	71	32	175	91	88	26	3	709	.. 3	..
	9	..	16	13	6	720
	10	..	4	17
	11	1	21	43
	12	1	1
	13	149	159	121	17	35	516
	14	2
	15	2
	17	2
	11	84	85	398	79	32	224	198	434	267	152	25	37	2,067	4	1.4
Total Singer	2,067
Skoda ..	11	1	..	9	181	90	11	36	33	120
	12	292
	12	7	..	9	181	90	11	36	33	412	..	0.3
Total Skoda	412
Standard ..	7	90	358	14	675	680
	8	79	96	1,166
	9	1,166
	10	330
	10	1	36	37	74	549
	11	10	18	297	32	..	1	1	391	1	..
	12	..	7	186	231	1	..
	13	11	13	27	2	35	52	5	7
	14	..	1	214
	15	..	4	1
	17	1	4	1,251	1,769	444	608	1,351	7,782
	19	..	7	23	3	..	28	1,499	33
	20	3	3
	Not Stated	3
Total Standard	..	23	87	655	190	125	439	1,519	1,251	1,769	444	608	2,122	11,062	1	7.4
Studebaker ..	21	9	30	7	38	9	2	15	17	13	15	186	3	..
	23	26
	25	..	37	136	173
	26	49	2	1	52
	27	57	21	78
	29	6	13	17	6
	30	31	1	..
	31	1	1
	36	11
	39	4	1	3	..	1	2	3
	40	2	1	5
Total Studebaker	..	95	73	211	33	7	38	9	3	18	17	14	17	572	1	0.4
Sunbeam ..	9	2	3	11	6	23
	10	1	1
	13	7	1	25	23	14	1	1	77
	16	4	2	17	17	9	18	77
	20	3	..	1	1	4
	26	4	5
Total Sunbeam	..	15	1	7	1	..	28	34	22	18	18	9	18	187	..	0.1

No. 2—TYPE OF VEHICLE ACCORDING TO MAKE, HORSEPOWER (R.A.C.), AND YEAR OF MODEL, SOUTH AUSTRALIA—continued.
(i) CARS—continued.

Make of Vehicle	Horse-power (R.A.C.)	Year of Model													Total	Percentage of Total Cars		
		Prior to 1930	1930-34	1935-39	1940-45	1946	1947	1948	1949	1950	1951	1952	1953	1954			1955	Not Stated
Triumph ..	7 8 9 10 11 13 15 17	6 1	22 13 3 9 7 .. 2 56	2 4 12 3 21 1 1 2 7 17 14 22 36 19 275 2 14 10 10	30 17 444 22 7 38 3 82 0.4
Total Triumph ..	10	7	638	..
Vauxhall ..	11 11 13 14 15 16 17 19 20 22 23 24 26	1,163 1,965 17 2,757 427 1 2,147 6 10 3 1,932 186 192
Total Vauxhall ..	11	1,932	..
Total Volkswagen ..	15	186	..
Whippet ..	18 21 23 25	2 10,808 117 781 898 958	7.2 0.6
Total Whippet ..	18	1,932	..
Willis ..	20 21 23 25 27	2 10,808 117 781 898 958
Total Willis ..	20	1,932	..
Wolseley ..	Not Stated	192	..
Total Wolseley ..	Not Stated	192	..

No. 2—TYPE OF VEHICLE ACCORDING TO MAKE, HORSEPOWER (R.A.C.), AND YEAR OF MODEL, SOUTH AUSTRALIA—continued.
(i) CARS—continued.

Make of Vehicle	Horse-power (R.A.C.)	Year of Model													Total	Percentage of Total Cars							
		Prior to 1930	1930-34	1935-39	1940-45	1946	1947	1948	1949	1950	1951	1952	1953	1954			1955	Not Stated					
Wolsley—continued	12	..	29	31	60	..		
	13	177	..	
	14	108	..	
	15	5	..	88	5	1	12	..	
	17	4	1	104	..
	20	6	2	596	..
	21	3	2	..
	23	1	4	..
	25	71	..
	Total Wolsley	..	9	45	210	10	1	14	96	94	262	179	178	199	112	1,579	1.1	
Total Other	..	299	130	240	25	4	8	17	33	50	35	21	26	65	29	1,038	0.7		
Total Cars	10,697	5,324	21,712	4,830	1,892	3,100	6,234	9,901	14,428	14,536	11,479	16,556	17,181	265	149,162	100.0		

No. 2—TYPE OF VEHICLE ACCORDING TO MAKE, HORSEPOWER (R.A.C.), AND YEAR OF MODEL, SOUTH AUSTRALIA—continued.
(ii) STATION WAGONS.

Make of Vehicle	Horse-power (R.A.C.)	Year of Model													Total	Percentage of Total Station Wagons		
		Prior to 1930	1930-34	1935-39	1940-45	1946	1947	1948	1949	1950	1951	1952	1953	1954			1955	Not Stated
Austin	8	18	..
Total Austin	10	122	..
Bedford	15	14	..
Total Bedford	11	154	11.5
Chevrolet	14	7	..
Total Chevrolet	27	3	..
Commer	21	6	17	0.8
Total Commer	26	2	1	1	3	3	6	..
Dodge	29	19	..
Total Dodge	30	8	1	7	3	3	1	..
Fargo	9	2	..
Total Fargo	10	10	..
Fiat	13	14	1.0
Total Fiat	23	3	4	..
Ford	25	2	..
Total Ford	27	3	2	2	26	..
Hillman	28	33	2.5
Total Hillman	28	3	..
Holden	6	4	0.3
Total Holden	10	1	57	..
International	7	1	..
Total International	22	7	1	..
Jowett	10	5	..
Total Jowett	24	1	3	10	..
Land Rover	30	4	2	6	5	..
Total Land Rover	32	5	5	9	6	2	115	8.6
Rover	9	5	..
Total Rover	10	5	..
Sum of all makes	16	156	..
Total Station Wagons	30	161	12.0
	4	0.3
	1	..
	5	..
	21	..
	27	2.0
	139	10.3
	15	..
	5	..
	20	1.5

No. 2—TYPE OF VEHICLE ACCORDING TO MAKE, HORSEPOWER (R.A.C.), AND YEAR OF MODEL, SOUTH AUSTRALIA—continued.
(ii) STATION WAGONS—continued.

Make of Vehicle	Horse-power (R.A.C.)	Year of Model													Total	Percentage of Total Station Wagons		
		Prior to 1930	1930-34	1935-39	1940-45	1946	1947	1948	1949	1950	1951	1952	1953	1954			1955	Not Stated
Morris	8	..	1	1	6	14	54	12	3	6	98	..
.. .. .	10	3	..	1	1	1	2	..
.. .. .	11	2	7	..
.. .. .	13	1	21	62	..	2	86	..
.. .. .	25	1	1	..
.. .. .	29	1	..
Total Morris	3	1	3	2	..	6	17	55	13	4	2	21	62	8	16	195	14.5
Total Peugeot ..	13	1	..	5	13	37	2.8
Plymouth	21	1	2	1	..
.. .. .	27	1	..
Total Plymouth	1	2	2	0.2
Total Renault ..	17	6	3	0.5
Skoda	11	14	15	2	31	..
.. .. .	12	14	15	2	3	3	..	34	2.5
Total Skoda	14	15	2	3	3	..	34	2.5
Standard	13	1	..
.. .. .	17	78	25	7	226	..
Total Standard	78	25	7	227	16.9
Volkswagen	13	1	..
.. .. .	14	10	..
Total Volkswagen	10	..
Total Willys	15	11	0.8
..	22	1.6
Total Other	16	2	5	39	2.9
Total Station Wagons	37	14	37	17	6	29	160	239	247	119	71	158	197	2	1,344	100.0	

No. 2—TYPE OF VEHICLE ACCORDING TO MAKE, HORSEPOWER (R.A.C.), AND YEAR OF MODEL, SOUTH AUSTRALIA—continued.
(iii) UTILITIES.

Make of Vehicle	Horse-power (R.A.C.)	Year of Model												Total	Percentage of Total Utilities					
		Prior to 1930	1930-34	1935-39	1940-45	1946	1947	1948	1949	1950	1951	1952	1953			1954	1955	Not Stated		
Armstrong Siddeley	14	1	1
18	149
Total Armstrong Siddeley	..	7	150	0.4	..
Austin	8	86
..	1,943
..	1
..	29
..	539
..	6
..	29
..	4
..	1
..	42
..	28
..	110
..	25
..	19
..	11
..	29
..	6
..	5
..	2
..	1
..	278	0.8	..
Total Buick	1,098
Chevrolet	576
..	2,614
..	35
..	1
..	4,324	12.8	..
..	194
..	96
..	29
..	9
..	1
..	1
..	330	1.0	..
Total Chrysler	..	285	1

No. 2—TYPE OF VEHICLE ACCORDING TO MAKE, HORSEPOWER (R.A.C.), AND YEAR OF MODEL, SOUTH AUSTRALIA—*continue*.
(iii) UTILITIES—*continued*.

Make of Vehicle	Horse-power (R.A.C.)	Year of Model												Total	Percentage of Total Utili-ties			
		Prior to 1930	1930-34	1935-39	1940-45	1946	1947	1948	1949	1950	1951	1952	1953			1954	1955	Not Stated
Commer ..	9	..	1	21	8	2	6	73	130	97	95	89	70	..	38	..
	10	10	5	76	15	10	1	560	..
	13	48	160	..
	14	1	..
	16	5	30	14	5	3	1	..	59	..
Total Commer ..	21	..	7	21	9	12	60	154	175	121	100	92	72	1	878	2.4
De Soto ..	23	14	16	30	..
	25	..	2	2	..
	26	..	3	3	..
	27	3	..
	28	26	..
Total De Soto ..	21	14	22	5	2	13	..	1	4	38	34	5	..	139	0.4
Dodge ..	21	14	1	6	..
	23	640	37	61	13	3	..	3	1	776	..
	25	5	2	48	10	72	..
	26	..	2	2	..
	27	..	2	50	32	39	..	31	59	76	121	96	26	5	716	..
	28	..	54	50	2	6	..	1	3	3	7	6	62	88	71	..	252	..
	33	1	2	1	..
Total Dodge ..	18	712	100	160	57	48	..	35	62	79	128	103	88	93	71	28	1,825	5.4
Durant ..	19	146	12	6	164	..
	23	7	7	..
	25	5	5	..
	27	..	2	2	..
Total Durant ..	27	159	14	6	179	0.5
Essex ..	17	128	2	130	..
	18	28	12	2	42	..
	20	1	1	..
	27	1	1	2	..
Total Essex ..	23	158	13	4	175	0.5
Fargo ..	25	6	2	8	..
	27	5	6	55	73	85	13	2	10	..
	28	35	6	49	53	9	3	9	47	53	34	..	453	..
	1	6	7	64	76	94	60	55	34	..	187	..
Total Fargo ..	8	..	46	14	55	60	658	2.0
Fiat ..	10	1	1	..
	19	39	5	3	47	..
	..	1	4	..
Total Fiat ..	7	41	3	52	0.2
Ford ..	10	1	4	16	17	25	8	79	..
	14	..	158	128	..	25	..	83	108	256	407	273	174	100	76	1	1,812	..
	15	72	..
	22	157	..
	24	141	92	372	..

No. 2—TYPE OF VEHICLE ACCORDING TO MAKE, HORSEPOWER (R.A.C.), AND YEAR OF MODEL, SOUTH AUSTRALIA—continued.
(iv) PANEL VANS.

Make of Vehicle	Horse-power (R.A.C.)	Year of Model													Total	Percentage of Total Panel Vans		
		Prior to 1930	1930-34	1935-39	1940-45	1946	1947	1948	1949	1950	1951	1952	1953	1954			1955	Not Stated
		Austin	7 8 10 15 22	3 1 1 1 4	1 2 3 14 7 2 2 2	7 5 12 14 7 52 73	1 2 3 22 12 1 35	1 1 1 3 1 4	1 1 1 8 2 8	1 1 1 21 21	33 33 31 31	68 108 110 33 33	26 4 30 13 13	49 5 55 1 1			28 2 30 30 20 20	15 39 7 61 20 20
<i>Total Austin Bedford</i>	10 11 14 15	2 2 2 2	3 7 1 1 1	12 14 7 52 73	22 12 1 35	3 1 1 8 2 8	21 21	31 31	33 33	110 33 33	30 13 13	1 1	30 30 20 20	61 20 20	1 1 1 1 1 1	410 39 148 55 20 262	7.8 5.0	
<i>Total Bedford Buick</i>	18 23 30	2 1 3	4 2 2	73	35	4	21	31	31	33	13	1	1	20	20	1	262	5.0
<i>Total Buick Chevrolet</i>	21 26 29 30	3 12 15	2 15 15	42 107 149	46 46	33 33	5 5	4 4	4 4	4 4	1 1	2 2	1 1	5 5	5 5	1 1	309 426	0.1 8.1
<i>Total Chevrolet Chrysler</i>	21 23	3 4	3 4	18 4	1 1	1 1	34 1	5 7	5 15	27 31	46	49	62	37	9	5	57 254 48	0.1 0.1
<i>Total Chrysler Commer</i>	9 10 13 14 16	2 2 2 2 4	2 2 2 2 4	13 4 17	1 1 2	1 1 1	1 1 35	3 7	3 15	30 31	46	49	62	37	9 5 51	1 1	309 426	8.1 0.1
<i>Total Commer De Soto</i>	21 28	1 1	1 1	17	2	1 1	35	15	59	35	48	51	64	51	5	1	383	7.3
<i>Total Dodge</i>	21 23 25 27 28	7 11 1 1 1	1 1 1 1 3	14	5	2 2	1	2	2	1 1 2	1 1 1	3 3	29 29	50 50	1	1	129	2.4
<i>Total Dodge Durant</i>	18 19	7 1	1 1	14	5	2 2	1	2	2	1 1 2	1 1 1	3 3	29 29	50 50	1 1	1	129	2.4
<i>Total Durant Total Essex Fargo</i>	17 23 25 27 28	8 2 2 2 4	2 2 2 2 6	1 1 1 4 6	5	2 2	1	2	2	1 1 2	1 1 1	3 3	29 29	50 50	1 1	1	129	0.2 0.0
<i>Total Fargo Fiat</i>	6 10	2 2	2 2	6	2	2 2	2	2	2	2 2	1 1 4	4 6	11 11 2	12 12	2 2	2 2	36 18 2	0.7 0.4
<i>Total Fiat</i>		2	2	6	2	2	2	2	2	2	4	3	2	12	2	2	20	0.4

No. 2—TYPE OF VEHICLE ACCORDING TO MAKE, HORSEPOWER (R.A.C.), AND YEAR OF MODEL, SOUTH AUSTRALIA—continued.
(iv) PANEL VANS—continued.

Make of Vehicle	Horse-power (R.A.C.)	Year of Model												Total	Percentage of Total Panel Vans			
		Prior to 1930	1930-34	1935-39	1940-45	1946	1947	1948	1949	1950	1951	1952	1953			1954	1955	Not Stated
Ford	7 10 15 22 24 26 30 32 42 1	.. 48	.. 16	4	4	3	1	1	.. 119	.. 112	.. 68	.. 85	.. 91	..	13 864 1 8 1 108 72 2 1,070 11 8 19 20.3 0.4
Total Ford G.M.C.	29 30 9	.. 126	.. 42	34 6 1 7	23 5 1 6	64	104	163	127	119	71	90	93	..	11 11 19
Total G.M.C. Graham & Paige	21 23 1	1 2
Total Graham & Hillman	9 10 1	3 2
Total Hillman	21 1	3	..
Total Holden International	26 27 30 35	17 1 1	15 1 15	20 .. 20	14	8	..	1 3 3	1 11 11	3	16 16	26 26	..	429 109 67 178	0.1 8.2 .. 3.4
Total International Total Jovetti	7	58	1.1
Bradford	15 61	20	414	0.0
Total Land Rover Morris	8 10 11 12 13 14 15 17 1	.. 5	5 7	4	2	2	4	20	23 90 6
Total Morris Oldsmobile	25 18 28 2	.. 96	.. 33	.. 5	16	38	120	260	145	82	54	134	132	..	1,125	21.4
Total Oldsmobile Total Peugeot	13 21 3	3 5	.. 0.1
Total Plymouth	23 3	24	0.4
Total Plymouth Reo	7 24 27 3	.. 5	3 5 1 1 4 5	.. 0.1 0.0 0.1
Total Reo 1	.. 1	1 1 4 5 0.1

No. 2—TYPE OF VEHICLE ACCORDING TO MAKE, HORSEPOWER (R.A.C.), AND YEAR OF MODEL, SOUTH AUSTRALIA—continued.
(iv) PANEL VANS—continued.

Make of Vehicle	Horse-power (R.A.C.)	Year of Model											Total	Percentage of Total Panel Vans				
		Prior to 1930	1930-34	1935-39	1940-45	1946	1947	1948	1949	1950	1951	1952			1953	1954	1955	Not Stated
Singer ..	8	2	1	3	..
Total Singer	9	1	..	1	2	0.1
Skoda ..	11	1	..	3	10	..
Total Skoda	12	1	0.2
Standard ..	8	1	11	..
	9	1	..
	10	2	2	..
	11	2	2	..
Total Standard ..	13	1	6	..
Total Studebaker	17	3	2	67	41	82	39	44	54	60	387	7.6
Total Tempo	21	2	67	42	82	39	44	54	61	399	0.2
Matador	13	1	5	4	10	..
Vauxhall ..	14	19	0.4
	14	1	1	9	8	1	2	..
	17	1	..	1	2	..
	24	1	..
Total Vauxhall	13	2	1	1	..	1	5	0.1
Volkswagen	14	1	..
Total Volkswagen	15	95	1.8
Whippet ..	23	9	3	12	..
Total Whippet	23	2	3	2	0.3
Willys ..	15	11	1	31	14	..
	20	33	..
Total Willys	23	1	..
Total Other	..	5	3	12	7	3	3	1	1	35	0.7
	36	0.7
Total Panel Vans	..	130	46	594	202	175	111	186	406	652	577	373	311	663	826	4	5,256	100.0

No. 2—TYPE OF VEHICLE ACCORDING TO MAKE, HORSEPOWER (R.A.C.), AND YEAR OF MODEL, SOUTH AUSTRALIA—continued.
(v) LORRIES—continued.

Make of Vehicle	Horse-power (R.A.C.)	Year of Model											Total	Percentage of Total Lorries							
		Prior to 1930	1930-34	1935-39	1940-45	1946	1947	1948	1949	1950	1951	1952			1953	1954	1955	Not Stated			
Chrysler ..	21	11																11			
	23	9																10			
	25	1																2			
	29	2																25			
Total Chrysler		23																265			
Commer ..	13	2																1			
	15	1																217			
	16																	19			
	20																	13			
	22																	1			
	23																	1			
	24																	1			
	25																	7			
(TS3 diesel)	26																	563			
	27																	1			
	29																	308			
	33																	340			
	38																	7			
Total Commer																		1,743			
Dennis ..	24																	4			
Total Dennis																		1			
De Soto ..	34																	5			
	21	1																1			
	27																	1			
	28																	61			
	29																	3			
Total De Soto		1																66			
Diamond T ..	25																	8			
	27																	95			
	29																	39			
	31																	33			
	33																	32			
	38																	29			
	51																	2			
	57																	1			
	76																	3			
Total Diamond T																		242			
Dodge ..	21	2																11			
	23	168																294			
	25	1																105			
	26	1																1			
	27	15																432			
	28																	733			
	29																	42			
	38																	3			
Total Dodge		187																1,621			
Total E.R.F.																		4			

No. 2—TYPE OF VEHICLE ACCORDING TO MAKE, HORSEPOWER (R.A.C.), AND YEAR OF MODEL, SOUTH AUSTRALIA—continued.
(V) LORRIES—continued.

Make of Vehicle	Horse-power (R.A.C.)	Year of Model												Total	Percentage of Total Lorries			
		Prior to 1930	1930-34	1935-39	1940-45	1946	1947	1948	1949	1950	1951	1952	1953			1954	1955	Not Stated
Fargo	21	3	4	37	1	7	..
	23	..	8	27	1	46	..
	25	..	6	123	3	36	..
	27	1	6	10	7	198	..
	28	469	..
	29	28	..
	38	2	..
	24	197	12	786	2.6
	..	19	2	2	..
	..	21	5	6	..
Total Fargo Federal	22	4	4	..
	25	2	2	..
	27	1	1	10	12	..
	31	5	..
	33	1	..
	38	5	..
	57	2	..
	..	28	8	17	2	39	0.1
	..	36	1	..
	..	43	50	..
Total Foden Ford	22	52	0.2
	24	44	..
	25	127	..
	26	1	..
	29	28	..
	30	19	..
	32	1986	..
	33	2,217	..
	42	17	..
	Not Stated	94	..
Total Ford G.M.C.	19	110	88	563	1,437	210	155	135	103	323	326	354	276	252	185	3	4,536	15.3
	24	1	1	..
	25	3	..	3	3	..
	26	6	7	6	3	..
	28	..	4	19	..
	29	1	4	..
	30	64	..
	31	166	..
	34	2	..
	Not Stated	33	..
Total G.M.C.	..	12	12	172	21	35	14	8	5	2	1	1	..	1	..	1	296	1.0

No. 2—TYPE OF VEHICLE ACCORDING TO MAKE, HORSEPOWER (R.A.C.), AND YEAR OF MODEL, SOUTH AUSTRALIA—continued.
(v) LORRIES—continued.

Make of Vehicle	Horse-power (R.A.C.)	Year of Model														Total	Percentage of Total Lorries	
		Prior to 1930	1930-34	1935-39	1940-45	1946	1947	1948	1949	1950	1951	1952	1953	1954	1955			Not Stated
		Mercedes Benz ..	13 30 46
<i>Total Mercedes Benz</i>	22	0.1
Morris	1	..
..	1	..
..	8	2	..
..	11	1	..
..	13	1	..
..	14	1	..
..	15	1	..
..	18	2	..
..	24	1	..
..	25	1	..
..	26	131	..
..	28	105	..
..	29	96	..
..	Not Stated	83	..
..	18	4	..
<i>Total Morris Oldsmobile</i>	2	4.9
..	19	7	..
..	24	4	..
..	26	2	..
..	28	25	..
..	30	72	..
..	4	..
..	13	1	..
<i>Total Oldsmobile Peugeot</i>	115	0.4
..	16	2	0.0
..	23	3	..
..	24	10	..
..	25	9	..
..	27	3	..
..	29	1	..
..	36	83	..
..	40	19	..
..	Not Stated	3	..
<i>Total Reo Scammell</i>	1	0.5
..	10	137	..
..	14	2	..
..	18	3	..
..	63	2	..
<i>Total Scammell Seddon</i>	8	0.0
..	19	10	..
..	29	23	..
..	36	1	..
<i>Total Seddon</i>	34	0.1

No. 2—TYPE OF VEHICLE ACCORDING TO MAKE, HORSEPOWER (R.A.C.), AND YEAR OF MODEL, SOUTH AUSTRALIA—continued.
(v) **LORRIES—continued.**

Make of Vehicle	Horse-power (R.A.C.)	Year of Model													Total	Percentage of Total Lorries		
		Prior to 1930	1930-34	1935-39	1940-45	1946	1947	1948	1949	1950	1951	1952	1953	1954			1955	Not Stated
Studebaker ..	21	4	2	5	7	2	5	7	2	1	2	1	1	1	1	1	20	0.1
	23	4	0.1
	25	16	1	17	0.1
	26	2	1	53	14	19	1	12	1	1	1	1	1	1	106	0.1
<i>Total Studebaker</i> <i>Total Tempo</i> Matador Thornycroft ..	27	10	2	2	1	14	0.1
	29	2	1	1	3	0.1
	30	1	1	0.1	
	36	1	1	0.1	
	..	18	2	21	5	13	21	21	21	5	1	1	1	1	1	166	0.6	
	13	44	0.1
	22	1	1	0.1
	24	1	1	0.1
	25	2	0.1
	30	30	0.1
<i>Total Thornycroft</i> Whippet ..	31	..	2	2	2	0.1
	36	1	1	4	0.1
	40	4	0.1
	43	11	0.2
	15	2	2	3	10	0.1
	18	8	2	6	0.1
	23	4	3	8	0.1
	..	15	5	24	0.1
	22	1	1	0.1
	26
<i>Total Whippet</i> White ..	28	2	2	0.1
	30	1	1	2	0.1
	31	6	4	0.1
	36	5	1	1	1	1	1	1	1	1	1	1	25	0.1	
	38	1	1	9	7	1	2	1	1	1	1	1	1	1	1	47	0.1	
<i>Total White</i> Willys ..	15	4	0.1
	20	6	7	0.1
	21	2	2	0.1
	25	1	4	5	0.1
	27	1	2	2	1	5	0.1
<i>Total Willys</i> <i>Total Other</i>	10	6	3	1	23	0.1
	..	150	24	10	35	3	2	9	11	19	22	6	15	10	18	337	1.1	
Total Lorries..	..	1,517	626	3,669	4,945	1,068	813	2,032	2,835	2,511	2,346	1,892	2,049	1,862	118	29,665	100.0	

No. 3—MAKE OF VEHICLE ACCORDING TO TYPE AND HORSEPOWER (R.A.C.), SOUTH AUSTRALIA.

Make of Vehicle	Horse-power (R.A.C.)	Motor Cars			Station Wagons	Omni-buses	Utili-ties	Panel Vans	Lorries					Other Commercial Vehicles	Total
		Sedan	Open	Other					Van	Tipper	Articu-lated or Semi-Trailer	Other			
													Plat-form		
A.E.C.	35 41 46 53 62 Not Stated	1 22 1 3 ..	14	5	2 1 .. 2 5	3 42 1 132 21	
Total A.E.C. Albion	19 22 24 28 29 34 36 51	30 148	..	27 1 1 2 4 1 .. 2 1 12	14 ..	13 ..	17	10 ..	30 229 1 1 2 7 1 1 2 2 11 27 1 3 25 3 204 4 59 299 2,044 1,990 11,126 37 165 808 2,721 69 234 13 79 232 2,289 49	
Total Albion Armstrong Siddeley	13 14 15 16 18 19 30 .. 7 8	1 1 24 3 52 4 59 144 258 1,955 7,722 32 37 806 2,028 40 70 18 22 23 26 28 29 Not Stated
Total Armstrong Siddeley Austin	10 11 12 13 15 17 18 22 23 26 28 29 Not Stated	1,688 1 977 4 98 1 1 25 20 185 5 2 3 73 ..	5 1 1 3 3
Total Austin Bedford	10 11 14 15 15 26 27	13,105 ..	2,959 ..	6 ..	154 7 3 ..	14 ..	2,639 238 1,169 111 3 ..	410 39 148 55 20 ..	31 ..	271 ..	36 ..	4 ..	5 ..	21,859 277 1,324 169 24 657 4,363	

No. 3—MAKE OF VEHICLE ACCORDING TO TYPE AND HORSEPOWER (R.A.C.), SOUTH AUSTRALIA—continued.

Make of Vehicle	Horse-power (R.A.C.)	Motor Cars			Station Wagons	Omni-buses	Utili-ties	Panel Vans	Lorries				Other Com-mercial Vehicles	Total	
		Sedan	Open	Other					Plat-form	Van	Tipper	Articu-lated or Semi-Trailer			Other
Commer	9	2	..	38	57	97		
	10	10	..	560	254	824		
	13	2	..	160	48	264	477		
	14	1	9	10		
	15	1		
	16	59	15	292		
	20	215	19		
	22	19	13		
	23	13	1		
	24	1	1		
	25	2		
	26	4	442	7		
	27	1	574		
	29	180	1		
	33	13	171	105	21	..	309		
	38	27	818	383	1,312	58	106	1	373		
Total Commer	14	27	2	2	..	7		
Daimler	24	270	136	1		
	15	12		
	16	3		
	18	35		
	20	1		
	21	6		
	25	5		
	35	1		
	43	19	19		
Total Daimler	19	82		
Dennis	17	1		
	24	1		
	32	1		
	34	1		
	36	1		
	41	2	1		
	Not Stated	4		
Total Dennis	3	1		
De Soto	21	23		
	23	1	..	30	1	1	146		
	25	63		
	26	70		
	27	7		
	28	1	..	26	555		
	29	75	6	48	9	4	..	273		
	Not Stated	139	7	3	3		
Total De Soto	2	1	53	9	4	..	1,117		
Diamond T	22	1		
	25	15		
	27	3	103		
	29	16	57		
	31	7	41		

No. 3—MAKE OF VEHICLE ACCORDING TO TYPE AND HORSEPOWER (R.A.C.), SOUTH AUSTRALIA—continued.

Make of Vehicle	Horse-power (R.A.C.)	Motor Cars			Station Wagons	Omni-buses	Utili-ties	Panel Vans	Lorries					Other Com-mercial Vehicles	Total
		Sedan	Open	Other					Van	Tipper	Articu-lated or Semi-Trailer	Other			
<i>Diamond T—continued</i>	33	8	21	4	5	2	..	40	
	38	6	..	6	6	2	19	1	..	35	
	51	2	2	
	57	1	
	76	3	4	
	21	41	..	176	9	17	33	7	..	299	
<i>Total Diamond T</i>	23	684	2	7	4	..	1	290	3	1	20	
<i>Dodge</i>	25	974	27	1	1	..	6	102	3	3	2,331	
	26	11	1	1,187	
	27	1,139	157	10	2	4	11	391	8	29	2	2	..	15	
	28	222	26	10	89	622	14	68	24	5	8	2,472	
	29	27	..	10	5	..	1	1,340	
	33	43	
	37	1	
	38	1	
<i>Total Dodge</i>	38	3,077	757	18	33	14	129	1,444	25	111	34	7	11	7,473	
<i>Durant</i>	18	41	491	..	1	..	8	15	720	
	19	16	13	1	38	
	23	..	7	12	
	25	..	2	11	
	27	..	3	5	
<i>Total Durant</i>	43	62	516	..	1	..	9	19	..	7	3	786	
<i>Total Erskine</i>	16	30	26	61	
<i>Total E.R.F.</i>	18	58	21	88	
<i>Total Erskine</i>	17	88	47	149	
<i>Essex..</i>	18	326	570	2	2	13	1,043	
	20	254	155	2	453	
	27	11	4	16	
<i>Total Essex</i>	27	3	2	2	2	15	7	
<i>Fargo</i>	21	594	731	7	1,519	
	23	7	
	25	56	
	27	48	
	28	661	
	29	703	
	38	29	
<i>Total Fargo</i>	38	17	36	683	2	79	19	3	4	1,506	
<i>Federal</i>	19	2	
	21	6	
	22	4	
	25	2	
	27	2	
	31	13	
	33	5	
	38	1	
	57	1	5	
<i>Total Federal</i>	1	..	27	2	2	8	..	1	41	

No. 3—MAKE OF VEHICLE ACCORDING TO TYPE AND HORSEPOWER (R.A.C.), SOUTH AUSTRALIA—continued.

Make of Vehicle	Horse-power (R.A.C.)	Motor Cars			Station Wagons	Omni-buses	Utili-ties	Panel Vans	Lorries				Other Commercial Vehicles	Total
		Sedan	Open	Other					Plat-form	Van	Tipper	Articu-lated or Semi-Trailer		
Goliath	6	21												21
Total Goliath	8	1												1
Graham and Graham-Paige	19	10	4											22
	21	117	9				16	1						14
	23	14	1				3	2						143
	25	34	4											53
	27													46
	29													7
	31													5
	36	8	1											9
Total Graham and Graham-Paige		2												2
Hillman	9	187	19				21	3						279
	10	1,939	114		5		30	2			2			2,090
	12	3,616	29		156		2	1						3,804
	13	4	10											14
	14	19												19
	19	502	1											503
	20	53	3											57
Total Hillman		6,133	158		161		33	3						6,488
Total Holden	21	21,308	1		4		4,610	429						26,352
Hudson	21	638	17	1	1		21	1						679
	24	3	1											4
	28	65	1	1										67
	29	28	10	6									1	75
	30	127												127
	34	7												7
Total Hudson	Not Stated	868	29	1	1		40	1						960
Humber	7		1											1
	8		6											6
	10		1											1
	11		1											1
	13	347	3											350
	15	2												2
	16	788												788
	20	13												13
	23	11												11
	26	708			2									713
	29	224		1	2									225
Total Humber		2,093	12	2	2		2							2,111
Hupmobile	16	7	29		1		28							69
	23	6	20				11							38
	25	35	9				9							53
	26		2											2
	27	2	1											3
	28	5	3				7							17

No. 3—MAKE OF VEHICLE ACCORDING TO TYPE AND HORSEPOWER (R.A.C.), SOUTH AUSTRALIA—continued.

Make of Vehicle	Horse-power (R.A.C.)	Motor Cars			Station Wagons	Omni-buses	Utili-ties	Panel Vans	Lorries				Other Com-mercial Vehicles	Total
		Sedan	Open	Other					Van	Tipper	Articu-lated or Semi-Trailer	Other		
<i>Hupmobile—continued</i>	29	15											15	
	32	2											3	
	39	1											1	
<i>Total Hupmobile</i>	16	73	64		1		1						207	
<i>International</i>	19				1								21	
	21												3	
	22												12	
	25												14	
	26			16	5	34	109			196	38	7	2,332	
	27				9	23	2			12	11	3	162	
	28				33	7				72	34	7	318	
	29				6	1				7	10	1	76	
	30			8	18	658	67			272	157	14	2,401	
	31				4					3	1		4	
	33				4					3	2		15	
	34				2					23	90	3	144	
	36				2					2	1		6	
	38										3		3	
	40										6		14	
	43				1						2		4	
	45									2	13	1	29	
	45									4				
Not Stated														
<i>Total International</i>	13			24	27	107	178			1	368	37	5,583	
<i>Jaguar</i>	19	41								591			41	
	25	668	27										78	
<i>Total Jaguar</i>	6	785	29										695	
<i>Jowett/Bradford</i>	7	1	1		139								814	
	10	1	1				58						141	
	13	382	5				2						115	
<i>Total Jowett/Bradford</i>	13	384	7		139		58						387	
<i>Karrier</i>	16									2			646	
	22									8			3	
	26												44	
	33									1			1	
	11												4	
<i>Total Karrier</i>	15												7	
<i>Land Rover</i>	15				15								59	
	15				20		497			10			513	
<i>Total Land Rover</i>	27						1,035						1,054	
<i>Leyland</i>	28						1,532						1,567	
	29												1	
	32									1			4	
	33				1					2			9	
	34												3	
	36												2	
	36									34	49		150	
	36									1			1	

No. 3—MAKE OF VEHICLE ACCORDING TO TYPE AND HORSEPOWER (R.A.C.), SOUTH AUSTRALIA—continued.

Make of Vehicle	Horse-power (R.A.C.)	Motor Cars			Station Wagons	Omni-buses	Utili-ties	Panel Vans	Lorries				Other Commercial Vehicles	Total
		Sedan	Open	Other					Van	Tipper	Articu-lated or Semi-Trailer	Other		
<i>Leyland—continued</i>	37	4	2	23	..	2	31
	40	2	1	1
	48	3	1	1	7
	55	13	1	1	47	..	1	74
	Not Stated	31	31
<i>Total Leyland</i>	48	89	6	121	..	10	314
<i>M.G.</i>	8	..	8	8
	10	97	356	453
	12	..	13	13
	13	49	8	57
	17	2	1	3
<i>Total M.G.</i>	..	148	386	2	1	534
<i>Mack</i>	28	1	2	2	5
	33	3	1	10	3
	36	1	14
	38	2	..	2	1
	43	22	41	13	5
	45	1	1	1	77
	47	2
	50	1
	57	5	5
	63	3	31	50	28	..	3	115
<i>Total Mack</i>	1
<i>Mercedes Benz</i>	12	1	1	74
	13	68	1	64
	23	64	8	3	8	19
	30	1
	46	1
	..	133	9	3	9	1	..	159
<i>Total Mercedes Benz</i>	..	5,778	2,468	..	98	..	414	10,034
<i>Morris</i>	8	736	23	..	2	..	23	821
	10	120	309	..	7	..	90	..	1	649
	11	32	2	6	..	13	1	44
	12	3,513	170	2	86	3	341	6	18	1	4,902
	14	142	37	2	..	2	197
	15	17	11	8	..	19	241	..	969	31	2	1,542
	17	19	2	1	25
	18	1	3
	19	5	6
	20	387	1	388
	22	1	1	2
	23	2	2
	24	2	1	123	4	1	134
	25	69	4	..	1	..	7	..	90	2	..	1	..	188
	26	81	4	2	3	..	96
	28	2	79	1	..	2	..	86
	29	1	4	5
<i>Total Morris</i>	Not Stated	1	1	10	195	25	1	1,125	2	19	5	9	4	19,129
	Stated	10,324	3,030	2,467	..	1,365

No. 3—MAKE OF VEHICLE ACCORDING TO TYPE AND HORSEPOWER (R.A.C.), SOUTH AUSTRALIA—continued.

Make of Vehicle	Horse-power (R.A.C.)	Motor Cars			Station Wagons	Omni-buses	Utili-ties	Panel Vans	Lorries				Other Com-mercial Vehicles	Total
		Sedan	Open	Other					Plat-form	Van	Tipper	Artiou-lated or Semi-Trailer		
<i>Total Tempo Matador</i>	13	2	4	19	41	3	69
Thornycroft ..	22	1	1
..	24	1	2
..	25	1	1
..	29	31
..	30	2	4
..	31	6
..	36	2
..	40	3	12
..	43	1
<i>Total Thornycroft</i>	8	60
Triumph ..	7	10	20	30
..	8	11	6	17
..	9	442	2	69	513
..	10	18	4	1	23
..	11	7	7
..	13	21	12	33
..	15	3	3
..	17	58	24	82
<i>Total Triumph</i>	..	570	68	70	703
Vauxhall ..	10	751	412	1,165
..	11	1,314	651	3	1,968
..	13	6	11	1	18
..	14	2,500	257	12	2	2,771
..	15	394	33	131	558
..	16	1	1	2
..	17	2,020	127	3	2	2,152
..	19	3	3	1	7
..	20	3	7	1	11
..	22	1	2	1	4
..	23	1,844	88	622	2,554
..	24	179	5	1	187
..	26	151	40	15	207
..	Not Stated	1	1	2
<i>Total Vauxhall</i>	..	9,168	1,637	793	5	11,606
Volkswagen ..	13	117	..	3	..	1	7	1	127
..	14	780	..	1	..	9	48	95	943
<i>Total Volkswagen</i>	..	897	..	1	..	10	55	96	1,070
Whippet ..	15	97	861	248	12	10	1,229
..	18	4	58	48	..	6	117
..	21	4	13	8	25
..	23	11	34	15	2	70
..	25	1	1	2
<i>Total Whippet</i>	..	117	968	327	14	24	1,446
White ..	22	1	2
..	26	1	2

No. 3—MAKE OF VEHICLE ACCORDING TO TYPE AND HORSEPOWER (R.A.C.), SOUTH AUSTRALIA—continued.

Make of Vehicle	Horse-power (R.A.C.)	Motor Cars			Station Wagons	Omni-buses	Utili-ties	Panel Vans	Lorries					Other Commercial Vehicles	Total
		Sedan	Open	Other					Plat-form	Van	Tipper	Articu-lated or Semi-Trailer	Other		
<i>White—continued</i>															
	28 2	1	1	2
	30	1	3
	31 10	6	6
	36	1	22
	38 12	1	5
	15	12	42
Total White	1,684
Willys	4	244
	20	1,001	142	..	22	..	33	..	7	67
	21	30	140	1	..	2	2
	23	4	39	31
	25	1	11	18
	27	8	2	5
	Not Stated	4
Total Willys	1
Wolseley	2,047
	8	1,057	355	..	22	..	35	..	22	19
	9	18	1	5
	10	3	1
	11	418	2	420
	12	2	2
	13	53	7	62
	14	177	177
	15	105	3	108
	17	9	3	14
	20	104	104
	21	596	596
	23	1	1	2
	25	4	4
	..	68	3	71
Total Wolseley	..	1,558	21	1,584
Total Other	..	454	452	1	6	59	177	28	112	3	26	21	7	46	1,392
Grand Total	..	127,582	21,432	148	1,344	973	33,837	5,256	24,561	480	3,150	1,340	134	462	220,699

No. 4—LORRIES: CARRYING CAPACITY ACCORDING TO MAKE AND BODY CONSTRUCTION, SOUTH AUSTRALIA.

Make of Vehicle	Body Construction	Carrying Capacity										Total				
		Under 10 cwt.	10 and under 15 cwt.	15 and under 20 cwt.	20 and under 40 cwt.	40 and under 60 cwt.	60 and under 80 cwt.	80 and under 100 cwt.	100 and under 140 cwt.	140 and under 240 cwt.	240 cwt. and over		Not Stated			
A.E.C.	Platform	27
	Van	14
	Tipper	13
	Semi-Trailer	17
Total A.E.C.		77
Albion	Platform	12
	Semi-Trailer	5
Total Albion		17
Austin	Platform	1	10	7	96	927	569	65	545	3	3	3	3	2,225
	Van	1	..	5	13	4	31
	Tipper	30	30	17	11	211	271
	Semi-Trailer	36
	Other	4
Total Austin		1	11	7	101	970	590	77	782	2,567
Bedford	Platform	1	33	100	1,168	564	1,230	396	711	1	1	1	1	4,288
	Van	2	37	16	46	10	9	121
	Tipper	18	31	114	67	325	571
	Semi-Trailer	1	2	5	2	19	103
	Other	1	3
Total Bedford		1	33	102	1,224	613	1,397	475	1,065	5,086
BUICK	Platform	3	12	8	15	38
	Semi-Trailer	2
Total Buick		3	12	8	15	40
Chevrolet	Platform	10	69	265	1,815	545	1,508	555	360	5,133
	Van	4	19	9	16	8	1	57
	Tipper	1	7	21	84	63	127	307
	Semi-Trailer	1	1	12	6	20	133
	Other	2	4	3	1	2	11
Total Chevrolet		10	69	272	1,844	580	1,623	633	510	5,647
Chrysler	Platform	1	6	10	7	24
	Semi-Trailer	1
Total Chrysler		1	6	10	8	25
Commer	Platform	7	9	143	379	78	265	121	231	1,312
	Van	12	2	2	..	5	24
	Tipper	1	1	7	10	36	168	270
	Semi-Trailer	1	..	4	136
	Other	1	1
Total Commer		..	9	144	392	87	278	157	409	1,743
Dennis	Platform	1
	Other	4
Total Dennis		5
De Soto	Platform	..	1	..	9	2	28	2	10	53
	Tipper	7	9
	Semi-Trailer	1	4
Total De Soto		..	1	..	9	2	29	..	18	66

No. 4—LORRIES: CARRYING CAPACITY ACCORDING TO MAKE AND BODY CONSTRUCTION, SOUTH AUSTRALIA—continued.

Make of Vehicle	Body Construction	Carrying Capacity											Total
		Under 10 cwt.	10 and under 15 cwt.	15 and under 20 cwt.	20 and under 40 cwt.	40 and under 60 cwt.	60 and under 80 cwt.	80 and under 100 cwt.	100 and under 140 cwt.	140 and under 240 cwt.	240 cwt. and over	Not Stated	
Diamond T	Platform	..	7	28	42	41	17	39	1	1	..	176	
	Van	..	1	3	1	2	1	1	9	
	Tipper	6	..	9	17	
	Semi-Trailer	1	13	18	1	33	
	Other	1	15	20	1	7	
Total Diamond T		..	8	31	47	49	20	51	15	20	1	242	
Dodge	Platform	..	49	399	197	472	50	154	4	1	..	1,444	
	Van	12	4	7	1	1	25	
	Tipper	4	8	28	7	58	5	5	..	111	
	Semi-Trailer	1	1	2	..	11	15	5	..	34	
	Other	2	1	2	..	2	24	6	..	7	
Total Dodge		..	50	417	210	510	58	226	24	6	..	1,621	
E.R.F.	Tipper	1	1	..	1	
	Semi-Trailer	1	3	..	3	
Total E.R.F.		2	2	..	4	
Fargo	Platform	..	17	149	119	280	23	88	4	683	
	Van	2	2	2	
	Tipper	13	5	52	1	79	
	Semi-Trailer	1	1	4	11	2	..	19	
	Other	2	..	1	3	
Total Fargo		..	17	149	126	293	29	145	16	2	1	786	
Federal	Platform	..	1	11	8	3	2	2	27	
	Van	1	2	
	Tipper	1	2	
	Semi-Trailer	1	2	
Total Federal		..	2	11	8	5	2	4	..	7	..	8	
Foden	Platform	39	
	Van	4	
	Tipper	1	
	Semi-Trailer	28	
Total Foden		19	
Ford	Platform	..	51	593	531	1,085	531	688	16	20	..	3,672	
	Van	..	1	19	7	11	3	10	25	13	..	52	
	Tipper	6	16	102	86	415	10	34	..	637	
	Semi-Trailer	2	4	37	93	14	..	153	
	Other	3	1	7	2	7	1	3	
Total Ford		..	52	621	555	1,207	626	1,157	129	17	7	4,536	
G.M.C.	Platform	..	3	60	37	53	37	33	6	237	
	Tipper	1	8	8	6	9	2	26	
	Semi-Trailer	2	11	2	..	18	
	Other	15	
Total G.M.C.		..	3	62	39	65	43	51	19	2	2	296	
International	Platform	..	8	625	240	722	483	671	72	4	..	2,908	
	Van	..	1	23	3	11	10	10	1	4	..	63	
	Tipper	8	5	69	105	361	40	2	..	591	

No. 4—LORRIES: CARRYING CAPACITY ACCORDING TO MAKE AND BODY CONSTRUCTION, SOUTH AUSTRALIA—continued.

Make of Vehicle	Body Construction	Carrying Capacity										Total	
		Under 10 cwt.	10 and under 15 cwt.	15 and under 20 cwt.	20 and under 40 cwt.	40 and under 60 cwt.	60 and under 80 cwt.	80 and under 100 cwt.	100 and under 140 cwt.	140 and under 240 cwt.	240 cwt. and over		Not Stated
International—continued	Semi-Trailer	1	..	4	7	35	224	94	3	368
	Other	1	..	2	4	18	10	37
Total International	Platform	1	10	86	658	248	808	609	1,095	347	100	5	3,967
Karrier	Van	3	2	7	..	2	44
	Tipper	7	3	4
Total Karrier	Platform	3	38	12	3	61	15	6	..	10
Leyland	Van	1	3	3	3	3	58
	Tipper	36	3	89
	Semi-Trailer	1	..	4	53	40
Total Leyland	Platform	1	4	3	104	74	55	8	121
Mack	Tipper	1	3	27	62	8	256
	Semi-Trailer	1	1	47	1	..	31
Total Mack	Platform	1	..	10	17	1	50
Mercedes Benz	Tipper	1	1	5	84	19	1	109
	Semi-Trailer	3	2	9
	Other	6	3	..	3
Total Mercedes Benz	Platform	1	1	8	8	3	..	9
Morris	Tipper	1
	Semi-Trailer	22
Total Morris	Other	1,038	64	99	13	115	1,365
Oldsmobile	Platform	32	5	4	..	2	51
	Tipper	5	2	1	1	10	19
	Semi-Trailer	2	1	5
	Other	2	..	1	..	2	1	9
Total Oldsmobile	Platform	1,077	73	105	14	131	2	1,449
Total Peugeot	Tipper	37	38	16	3	106
Reo	Other	37	41	22	3	9
	Platform	115
	Tipper	26	27	32	18	10	116
	Semi-Trailer	3	1	1	2	2	1	6
Total Reo	Other	1	2	2	1	6
Total Scammell	Platform	29	28	34	21	12	8	9
Seddon	Van	7	2	3	9	137
	Tipper	4	1	4	6	2	..	8
	Semi-Trailer	2	..	1	1	18
Total Seddon	Platform	3
Studebaker	Tipper	6	7	5	11	1	..	12
	Semi-Trailer	19	17	36	33	22	18	7	..	34
	Other	4	3	1	1	147
Total Studebaker	Platform	19	1	4	3	8	2	16
	Tipper	2
	Semi-Trailer	19	18	40	36	31	2	166

No. 4—LORRIES: CARRYING CAPACITY ACCORDING TO MAKE AND BODY CONSTRUCTION, SOUTH AUSTRALIA—continued.

Make of Vehicle	Body Construction	Carrying Capacity										Total			
		Under 10 cwt.	10 and under 15 cwt.	15 and under 20 cwt.	20 and under 40 cwt.	40 and under 60 cwt.	60 and under 80 cwt.	80 and under 100 cwt.	100 and under 140 cwt.	140 and under 240 cwt.	240 cwt. and over		Not Stated		
Tempo Matador	Platform	..	1	40	41
Van	Van	1	2	3
Total Tempo Matador	1	42	44
Thornycroft	Platform	1	8
.. ..	Tipper	29
.. ..	Semi-Trailer	11
.. ..	Other	4
Total Thornycroft	1	1
Total Whippet	Platform	3	4	10	52
White	Platform	24
.. ..	Tipper	12
.. ..	Semi-Trailer	2
Total White	11
Willys	Platform	25
.. ..	Tipper	22
Total Willys	1
Total Other	8	32	15	108	53	8	11	24	22	23	17	23
Total	35	316	1,070	6,886	3,729	7,101	2,831	5,890	1,279	408	120	..	29,665	

No. 5—LORRIES: UNLADEN WEIGHT ACCORDING TO MAKE AND BODY CONSTRUCTION, SOUTH AUSTRALIA.

Make of Vehicle	Body Construction	Unladen Weight										Total				
		Under 20 cwt.	20 and under 30 cwt.	30 and under 35 cwt.	35 and under 45 cwt.	45 and under 50 cwt.	50 and under 55 cwt.	55 and under 60 cwt.	60 and under 80 cwt.	80 and under 100 cwt.	.100 cwt. and over		Not Stated			
A.E.C.	Platform	27
	Van	14
	Tipper	13
	Semi-Trailer	17
Total A.E.C.		71
Albion	Platform	12
	Semi-Trailer	5
Total Albion		17
Austin	Platform	..	9	5	302	1,184	147	377	184	13	1	2	2	2	2	31
	Van	..	1	..	1	5	8	2	13	1	2,225
	Tipper	11	11	217	13	271
	Semi-Trailer	1	..	3	3	36
	Other	1	..	3	3	4
Total Austin		..	10	5	303	1,196	168	390	420	47	2,567
Bedford	Platform	..	62	40	1,472	1,248	719	478	244	17	4	4	4	4	4	4,288
	Van	..	2	1	15	20	16	21	40	5	1	2	2	2	2	121
	Tipper	14	20	36	45	417	37	2	571
	Semi-Trailer	1	3	1	5	14	25	54	103
	Other	2	1	3
Total Bedford		..	64	41	1,502	1,291	772	549	717	85	61	5,086
Buick	Platform	..	16	14	8	38
	Semi-Trailer	1	1	2
Total Buick		..	16	14	9	1	40
Chevrolet	Platform	..	801	411	1,116	1,044	966	391	332	39	4	5,133
	Van	1	2	7	11	10	24	2	57
	Tipper	..	2	2	5	13	18	26	213	26	307
	Semi-Trailer	1	1	5	5	22	31	68	133
	Other	..	1	1	2	..	2	1	4	1	11
Total Chevrolet		..	804	415	1,126	1,065	1,002	433	595	98	72	5,641
Chrysler	Platform	..	22	2	24
	Semi-Trailer	1	1
Total Chrysler		..	22	2	1	25
Commer	Platform	..	15	406	114	159	216	36	337	28	1	1,312
	Van	1	10	3	1	3	3	3	24
	Tipper	2	1	5	2	123	117	20	270
	Semi-Trailer	6	..	5	18	107	136
	Other	1
Total Commer		..	15	406	117	170	230	39	468	167	131	1,743
Dennis	Platform	1
	Other	1	3	1	4
Total Dennis		1	3	1	5
De Soto	Platform	..	2	..	8	4	24	2	8	4	1	53
	Tipper	9
	Semi-Trailer	4
Total De Soto		..	2	..	8	4	24	2	8	4	1	66

No. 5—LORRIES: UNLADEN WEIGHT ACCORDING TO MAKE AND BODY CONSTRUCTION, SOUTH AUSTRALIA—continued.

Make of Vehicle	Body Construction	Unladen Weight										Total
		Under 20 cwt.	20 and under 30 cwt.	30 and under 35 cwt.	35 and under 45 cwt.	45 and under 50 cwt.	50 and under 55 cwt.	55 and under 60 cwt.	60 and under 80 cwt.	80 and under 100 cwt.	100 cwt. and over	
Diamond T	Platform	..	9	41	25	29	25	37	7	3	..	176
	Van	..	1	1	2	..	1	2	1	1	..	9
	Tipper	7	5	1	..	17
	Semi-Trailer	33	..	33
	Other	1	..	7
Total Diamond T		..	10	42	27	31	32	47	14	39	..	242
Dodge	Platform	173	96	378	379	170	110	190	7	1	..	1,444
	Van	8	5	2	..	5	3	2	..	25
	Tipper	5	3	3	9	59	32	111
	Semi-Trailer	3	..	5	5	21	..	34
	Other	1	..	2	..	1	..	2	7
Total Dodge		174	96	393	387	179	120	201	47	24	..	1,621
E.R.F.	Tipper	1	..	1
	Semi-Trailer	3	..	3
Total E.R.F.		4	..	4
Fargo	Platform	6	38	199	227	106	37	65	5	683
	Van	1	2
	Tipper	2	4	5	20	41	7	..	79
	Semi-Trailer	1	3	14	..	19
	Other	3	3
Total Fargo		6	38	199	229	110	44	90	49	21	..	786
Federal	Platform	1	6	5	7	3	2	3	27
	Van	..	1	1	2
	Tipper	1	2
	Semi-Trailer	1	2
Total Federal		1	7	5	7	3	3	3	2	8	..	8
Foden	Platform	4	..	4
	Van	1	..	1
	Tipper	28	..	28
	Semi-Trailer	19	..	19
Total Foden		52	..	52
Ford	Platform	24	226	490	883	774	542	500	64	69	3	3,672
	Van	..	1	14	12	6	1	8	9	1	..	53
	Tipper	..	1	3	3	15	29	522	58	6	..	637
	Semi-Trailer	2	11	66	74	..	153
	Other	2	2	1	3	9	3	1	..	21
Total Ford		24	228	509	900	796	577	1,050	200	151	3	4,536
G.M.C.	Platform	5	36	40	44	43	23	20	23	3	..	237
	Tipper	1	3	14	6	2	..	26
	Semi-Trailer	6	4	8	..	18
	Other	1	..	9	2	1	..	15
Total G.M.C.		5	36	41	47	44	25	49	35	14	..	296
International	Platform	..	136	629	348	551	526	617	36	29	1	2,908
	Van	11	7	8	4	18	9	5	..	63
	Tipper	..	1	2	3	14	16	412	118	25	..	591

No. 5—LORRIES: UNLADEN WEIGHT ACCORDING TO MAKE AND BODY CONSTRUCTION, SOUTH AUSTRALIA—continued.

Make of Vehicle	Body Construction	Unladen Weight											Total		
		Under 20 cwt.	20 and under 30 cwt.	30 and under 35 cwt.	35 and under 45 cwt.	45 and under 50 cwt.	50 and under 55 cwt.	55 and under 60 cwt.	60 and under 80 cwt.	80 and under 100 cwt.	100 cwt. and over	Not Stated			
Tempo Matador ..	Platform	1	40	41
Van ..	Van	2	1	3
Total Tempo Matador	1	42	1	44
Thornycroft ..	Platform	1	8
..	Tipper	29
..	Semi-Trailer	1	11
..	Other	4
Total Thornycroft	2	52
Total Whippet ..	Platform	8	10	4	2	1	24
White ..	Platform	2	1	12
..	Tipper	2
..	Semi-Trailer	11
Total White	2	1	25
Willys ..	Platform	1	9	4	6	2	3	22
..	Tipper	1	1
Total Willys	1	9	4	6	3	23
Total Other	31	96	47	47	12	5	5	15	20	59	337
Total	65	1,464	2,248	5,472	5,927	4,117	2,892	4,939	1,193	1,301	47	47	29,665	

**No. 6—DIESEL-POWERED COMMERCIAL VEHICLES ACCORDING TO MAKE
AND HORSEPOWER (R.A.C.), SOUTH AUSTRALIA.**

Make of Vehicle	Horsepower (R.A.C.)	Lorries	Omnibuses	Other Commercial Vehicles	Total
A.E.C.	35	1	1
	41	41	..	1	42
	46	1	1
	53	12	118	2	132
	62	16	..	5	21
<i>Total A.E.C...</i>	71	118	8	197
Albion	28	4	..	3	7
	34	1	1
	36	2	2
	51	5	..	6	11
<i>Total Albion</i>	12	..	9	21
Atkinson	22	..	2	..	2
	36	..	2	..	2
	43	2	2
<i>Total Atkinson</i>	2	4	..	6
Austin	29	48	1	..	49
	Not Stated	1	1
<i>Total Austin</i>	49	1	..	50
Bedford	29	35	14	1	50
	33	..	4	..	4
	38	..	1	..	1
<i>Total Bedford</i>	35	19	1	55
Commer .. (TS3 diesel)	25	7	7
	29	109	1	..	110
	38	7	7
<i>Total Commer</i>	123	1	..	124
<i>Total Daimler</i>	43	..	19	..	19
Dennis	34	1	..	2	3
	36	..	1	..	1
	41	..	2	2	4
<i>Total Dennis..</i>	1	3	4	8
<i>Total De Soto</i>	29	3	3
Diamond T	22	..	1	..	1
	29	3	8	..	11
	33	1	1	..	2
	57	1	1
	76	3	..	1	4
<i>Total Diamond T</i>	8	10	1	19
Dodge	29	42	..	1	43
	38	3	3
<i>Total Dodge</i>	45	..	1	46
<i>Total E.R.F.</i>	43	4	..	1	5
Fargo	29	28	1	..	29
	38	2	2
<i>Total Fargo</i>	30	1	..	31
Federal	33	1	1
	57	2	..	1	3
<i>Total Federal</i>	3	..	1	4
Fiat	37	14	..	1	15
	Not Stated	1	1
<i>Total Fiat</i>	15	..	1	16
Foden	28	1	1
	36	1	1
	43	50	3	3	56
<i>Total Foden</i>	52	3	3	58
Ford	25	1	1
	29	19	9	..	28
	33	17	2	..	19
<i>Total Ford</i>	37	11	..	48
G.M.C.	29	4	4
	43	..	1	..	1
<i>Total G.M.C.</i>	4	1	..	5
Guy	22	1	1	..	2
	43	..	3	..	3
<i>Total Guy</i>	1	4	..	5
International	26	1	1
	29	16	2	..	18
	31	1	1
	36	3	1	..	4
	38	3	3
	40	1	1
	43	3	1	..	4
<i>Total International</i>	28	4	..	32
Leyland	29	1	1
	32	1	1	..	2
	34	130	..	3	133
	37	29	..	2	31
	48	3	3	1	7
	55	60	13	1	74
<i>Total Leyland</i>	224	17	7	248

No. 6—DEISEL-POWERED COMMERCIAL VEHICLES ACCORDING TO MAKE
AND HORSEPOWER (R.A.C.), SOUTH AUSTRALIA—continued.

Make of Vehicle	Horsepower (R.A.C.)	Lorries	Omnibuses	Other Commerical Vehicles	Total
M.A.N.	42	..	1	..	1
	45	3	3
	55	1	1
<i>Total M.A.N.</i>	4	1	..	5
Mack	33	2	1	..	3
	36	3	3
	43	4	..	1	5
	45	76	..	1	77
	47	2	2
	57	5	5
	63	2	2
<i>Total Mack</i>	94	1	2	97
Mercedes Benz	13	2	..	2	4
	30	19	19
	46	1	1
<i>Total Mercedes Benz</i>	22	..	2	24
Morris	26	38	38
	28	5	5
	29	4	..	1	5
<i>Total Morris</i>	47	..	1	48
<i>Total Reo</i>	29	3	2	..	5
Scammell	62	2	2
	63	2	..	2	4
<i>Total Scammell</i>	2	..	4	6
Seddon	19	10	10
	29	23	2	2	27
	36	1	1
<i>Total Seddon</i>	34	2	2	38
Sentinel.. . . .	36	1	1
	54	1	1
<i>Total Sentinel</i>	2	2
<i>Total Standard</i>	16	1	1
Thornycroft	30	3	3
	31	2	..	2	4
	36	3	..	2	5
	40	11	..	1	12
	43	1	1
<i>Total Thornycroft</i>	20	..	5	25
Vulcan	28	1	1
	29	3	3
<i>Total Vulcan</i>	4	4
<i>Total White</i>	36	..	2	..	2
<i>Total Other</i>	19	1	..	20
Total	998	225	54	1,277

No. 7—MOTOR CYCLES ACCORDING TO MAKE, SOUTH AUSTRALIA.

Make of Cycle	Number of Cycles	Make of Cycle	Number of Cycles
A.B.J.	11	Malvern Star	286
A.J.S.	1,152	Matchless	1,162
A.P.E.	1	Minimotor	15
Acme	166	Mobylette	5
Adler	44	Mosquito	8
Ambassador	157	Moto Guzzi	37
Ami	1	N.S.U.	19
Ariel	1,029	New Hudson	124
Augusta	5	Norman	69
Autobyke	1	Norton	664
B.M.W.	157	O.E.C.	23
B.S.A.	8,843	Panther	371
Berini	40	Power Pak	19
Bianchi	1	Puch	144
Bown	1	Romer	27
Corgi	18	Royal Enfield	645
Cyclemaster	179	Rudge	37
D.K.W.	118	Sun	117
Dot	9	Sunbeam	83
Douglas	129	Swallow Gadabout	19
Ducatti	1	T.W.N.	22
Excelsior	883	Tandon	1
Francis Barnett	319	Tilbrook	12
Harley Davidson	546	Triumph	2,125
Hartley	4	Velocette	535
Heinkel	2	Vespa	171
Horex	24	Victoria	41
Indian	83	Villiers	19
J.A.P.	7	Vincent	86
James	811	Zundapp	192
Jawa	1,237	Other	376
Lambretta	271		
		Total	23,704

No. 8—DISTRIBUTION OF VEHICLES ACCORDING TO LOCAL GOVERNMENT AREA AND STATISTICAL DIVISION, SOUTH AUSTRALIA.

NOTE.—Vehicles have been allocated to Local Government Areas according to the addresses of the owners shown on the registration certificates, but the vehicles themselves are not necessarily located or generally used in such areas. An index of Local Government Areas will be found on page 54.

Local Government Area	Cars	Station Wagons	Omni-buses	Utili-ties	Panel Vans	Lorries	Other Com-mercial Vehicles	Total (excl. Motor Cycles)	Motor Cycles
METROPOLITAN AREA OF ADELAIDE									
Adelaide and Suburbs ..	90,685	926	647	12,326	3,514	9,714	307	118,119	16,550
CENTRAL STATISTICAL DIVISION									
Municipal Corporations—									
Edinburgh	128	..	1	36	3	30	..	198	8
Gawler	1,087	5	3	297	26	192	..	1,610	116
Kapunda (incl. Kap- unda District Corp.)	377	..	3	135	5	119	1	640	39
Maitland (a)	250	..	1	80	5	84	..	420	10
Strathalbyn	470	2	2	132	12	130	..	748	69
Victor Harbor	708	2	8	235	21	138	1	1,113	54
District Councils—									
Angaston	1,015	5	1	383	27	316	1	1,748	235
Balaklava	542	1	..	177	3	197	..	920	31
Barossa	465	7	..	143	8	202	1	826	72
Dudley	25	1	1	26	1	18	..	72	5
East Torrens	612	2	..	180	18	337	..	1,149	112
Encounter Bay	26	2	..	18	1	9	..	56	3
Eudunda	331	5	1	130	10	151	..	628	20
Freeling	351	1	..	96	8	130	2	588	63
Gumeracha	643	1	1	168	17	237	1	1,068	90
Kapunda	(Include d with K	apunda	Municipa	l Corpora	tion)				
Keyneton and Swan Reach	199	..	2	124	5	100	..	430	38
Kingscote	342	5	4	250	10	183	..	794	34
Mallala	575	3	..	158	11	202	..	949	57
Meadows	860	6	3	330	31	324	3	1,557	112
Minlaton	855	..	4	304	14	328	2	1,507	105
Mount Barker	837	2	1	225	23	210	4	1,302	110
Mount Pleasant	352	2	3	148	6	147	..	658	47
Mudla Wirra	235	2	..	61	3	98	..	399	38
Munno Para East	147	3	1	49	5	48	..	253	28
Noarlunga	634	9	8	186	31	111	3	982	108
Onkaparinga (a)	821	3	2	245	16	295	1	1,383	107
Owen	374	2	1	103	7	146	1	634	11
Port Elliott	420	4	2	163	13	122	..	724	58
Port Wakefield	217	..	1	73	3	87	..	381	26
Riverton	323	1	3	114	6	140	..	587	28
Robertstown (a)	269	1	1	89	7	117	..	484	32
Saddleworth	318	146	4	153	1	622	17
Salisbury	1,452	31	10	268	58	211	..	2,030	268
Stirling	899	16	17	253	46	166	5	1,402	162
Strathalbyn	313	152	7	133	..	605	47
Tanunda	498	1	2	134	17	145	2	799	93
Teatree Gully	478	3	9	109	16	146	..	761	103
Truro	168	..	1	78	3	93	..	343	25
Warooka	181	1	2	100	1	75	1	361	16
Willunga	450	5	1	161	13	128	2	760	79
Yankalilla	491	7	3	157	13	157	..	828	69
Yorke Peninsula	496	1	2	194	9	213	..	915	24
Yorketown	529	214	7	178	..	928	31
TOTAL	20,763	142	105	6,824	550	6,746	32	35,162	2,800
LOWER NORTH STATISTICAL DIVISION									
Municipal Corporations—									
Burra	388	..	1	211	11	136	..	747	30
Clare (including Clare District Council)	690	5	..	252	14	210	1	1,172	72
Jamestown	411	1	2	123	10	134	5	686	26
Kadina (including Kad- ina District Council)	1,012	1	..	163	24	286	..	1,486	79
Moonta	465	1	3	114	10	116	..	709	48
Port Pirie	2,385	19	7	481	64	289	1	3,246	577
Walleroo	440	1	..	77	4	43	..	565	61
District Councils—									
Blyth	248	..	2	106	5	139	..	500	10
Burra Burra	314	2	..	145	5	158	..	624	39
Bute	447	1	4	113	7	184	1	757	17
Clare	(Include d with C	lare Municipa	l Corpora	tion)					
Clinton	226	77	5	114	..	422	11
Crystal Brook	353	4	1	104	8	101	1	572	31

(a) Partly estimated.

No. 8—DISTRIBUTION OF VEHICLES ACCORDING TO LOCAL GOVERNMENT
AREA AND STATISTICAL DIVISION, SOUTH AUSTRALIA—continued.

Local Government Area	Cars	Station Wagons	Omni-buses	Utilities	Panel Vans	Lorries	Other Commercial Vehicles	Total (excl. Motor Cycles)	Motor Cycles
LOWER NORTH STATISTICAL DIVISION—continued									
Georgetown	316	..	1	100	3	141	..	561	15
Gladstone	210	1	..	62	1	56	1	331	20
Hallett	319	2	..	170	5	113	..	609	58
Jamestown	188	1	3	85	2	98	..	377	9
Kadina	(included with Kadina Municipal Corporation)
Laura	189	..	1	75	5	78	..	348	14
Pirie	120	36	2	89	..	247	12
Port Broughton	274	2	2	78	4	107	..	467	15
Redhill	174	1	..	68	2	92	1	338	5
Snowtown	428	2	3	155	10	198	..	796	31
Spalding	157	1	2	63	1	85	..	309	8
Upper Wakefield	177	1	1	99	7	80	..	365	26
Unincorporated	1	3	4	..
TOTAL	9,932	46	33	2,960	209	3,047	11	16,238	1,214
UPPER NORTH STATISTICAL DIVISION									
Municipal Corporations—									
Peterborough	543	4	..	184	13	90	5	839	77
Port Augusta	994	13	8	367	43	165	1	1,591	202
Quorn (including Kanyaka District Council)	378	2	..	170	7	74	..	631	28
District Councils—									
Carrieton	82	54	1	37	..	174	5
Hawker	115	94	1	48	1	259	6
Kanyaka	(included with Quorn Municipal Corporation)
Orroroo	298	..	1	153	6	126	..	584	24
Peterborough	108	1	..	72	2	59	..	242	18
Port Germein	644	3	3	277	6	331	1	1,265	47
Wilmington	182	88	4	58	..	332	14
Unincorporated	64	3	..	57	4	30	..	158	6
TOTAL	3,408	26	12	1,516	87	1,018	8	6,075	427
SOUTH EASTERN STATISTICAL DIVISION									
Municipal Corporations—									
Mount Gambier (including Mount Gambier District Council)	2,779	17	11	970	117	764	5	4,663	294
Naracoorte	1,003	6	8	433	29	398	6	1,883	79
Districts Council—									
Beachport	224	3	..	102	11	54	..	394	15
Lacepede	262	..	1	148	8	126	1	546	20
Lucindale	199	5	1	138	4	76	2	425	12
Millicent	752	5	4	394	28	189	..	1,372	54
Mount Gambier (included with Mount Gambier Municipal Corporation)
Naracoorte	295	4	1	122	1	113	1	537	12
Penola	757	6	4	306	29	230	1	1,333	57
Port MacDonnell	234	2	2	146	11	108	..	503	21
Robe	97	..	2	93	8	37	..	237	7
Tantanoola	255	1	2	138	2	111	1	510	25
Tatiara (including Unincorporated)	1,146	8	10	560	28	521	..	2,273	75
TOTAL	8,003	57	46	3,550	276	2,727	17	14,676	671
WESTERN STATISTICAL DIVISION									
Municipal Corporations—									
Port Lincoln	1,245	5	3	543	48	318	1	2,163	241
Whyalla	1,504	23	8	392	70	186	..	2,183	441
District Councils—									
Cleve	533	..	1	158	7	270	..	969	15
Elliston	341	192	1	198	..	732	20
Franklin Harbor	225	1	..	96	7	106	..	435	10
Kimba	281	3	..	114	5	163	1	567	19
Le Hunte	312	1	3	133	5	203	1	658	25
Lincoln	579	2	2	286	18	322	2	1,211	30
Murat Bay	304	2	1	122	7	161	..	597	37
Streaky Bay	364	2	1	203	11	201	..	782	24
Tumby Bay	535	1	3	232	5	278	1	1,055	21
Unincorporated (a)
TOTAL	6,223	40	22	2,471	184	2,406	6	11,352	883

(a) Included in Whyalla and in Local Government Areas adjacent to Unincorporated Areas within this Statistical Division.

No. 8—DISTRIBUTION OF VEHICLES ACCORDING TO LOCAL GOVERNMENT
AREA AND STATISTICAL DIVISION, SOUTH AUSTRALIA—continued.

Local Government Area	Cars	Station Wagons	Omni- buses	Utili- ties	Panel Vans	Lorries	Other Com- mercial Vehicles	Total (excl. Motor Cycles)	Motor Cycles
MURRAY-MALLEE STATISTICAL DIVISION									
Municipal Corporations—									
Murray Bridge	1,049	8	8	326	28	250	..	1,669	140
Renmark (including Renmark Irrigation Trust District Council)	1,125	4	12	392	26	256	..	1,815	147
District Councils—									
Barmera	473	4	2	187	9	157	1	833	79
Berri	837	2	3	235	17	231	1	1,326	105
Brown's Well	144	1	..	70	..	78	..	293	10
Karoonda	248	1	5	103	2	114	..	473	10
Lameroo	409	3	..	123	7	237	1	780	17
Loxton	977	4	5	375	39	328	..	1,728	106
Mannum	571	..	2	182	15	174	2	946	93
Marne	171	..	2	82	4	100	..	359	16
Meningie	550	5	3	217	13	167	1	956	50
Mobilong	386	4	2	137	7	144	..	680	31
Morgan	256	..	1	119	2	100	..	478	34
Murray East	175	66	1	85	..	327	14
Paringa	97	50	3	42	..	192	17
Peake	249	..	1	103	1	132	..	486	10
Pinaroo	376	1	6	130	11	149	2	675	22
Renmark Irrigation Trust	(included	with Re	mark M	unicipal	Corporat	ion)			
Waikerie	692	9	4	207	12	183	..	1,107	81
Unincorporated	118	1	..	58	..	84	1	262	15
TOTAL	8,903	47	56	3,162	197	3,011	9	15,385	997
Remainder of State (Un- incorporated)	993	27	2	425	33	209	3	1,692	159
Commonwealth Govern- ment owned Vehicles	252	33	50	603	206	787	69	2,000	3
Grand Total	149,162	1,344	973	33,837	5,256	29,665	462	220,699	23,704

INDEX OF LOCAL GOVERNMENT AREAS, SOUTH AUSTRALIA.

Local Government Area (M.) Municipal Corporation (D.C.) District Council	Page	Local Government Area (M.) Municipal Corporation (D.C.) District Council	Page
Adelaide (City)	51	Mount Gambier (M.)	52
Angaston (D.C.)	51	Mount Pleasant (D.C.)	51
Balaklava (D.C.)	51	Mudla Wirra (D.C.)	51
Barmera (D.C.)	53	Munno Para East (D.C.)	51
Barossa (D.C.)	51	Murat Bay (D.C.)	52
Beachport (D.C.)	32	Murray Bridge (M.)	53
Berri (D.C.)	53	Naracoorte (D.C.)	52
Blyth (D.C.)	51	Naracoorte (M.)	52
Brighton (M.)	(a)	Noarlunga (D.C.)	51
Brown's Well (D.C.)	53	Onkaparinga (D.C.)	51
Burnside (M.)	(a)	Orroroo (D.C.)	52
Burra (M.)	51	Owen (D.C.)	51
Burra Burra (D.C.)	51	Paringa (D.C.)	53
Bute (D.C.)	51	Payneham (M.)	(a)
Campbelltown (M.)	(a)	Peake (D.C.)	53
Carrieton (D.C.)	52	Penola (D.C.)	52
Clare (D.C.)	51	Peterborough (D.C.)	52
Clare (M.)	51	Peterborough (M.)	52
Cleve (D.C.)	52	Pinnaroo (D.C.)	53
Clinton (D.C.)	51	Pirie (D.C.)	52
Colonel Light Gardens (M.)	(a)	Port Adelaide (M.)	(a)
Crystal Brook (D.C.)	51	Port Augusta (M.)	52
Dudley (D.C.)	51	Port Broughton (D.C.)	52
East Murray (D.C.)	53	Port Elliot (D.C.)	51
East Torrens (D.C.)	51	Port Germein (D.C.)	52
Edithburgh (M.)	51	Port Lincoln (M.)	52
Elliston (D.C.)	52	Port MacDonnell (D.C.)	51
Encounter Bay (D.C.)	51	Port Pirie (M.)	51
Enfield (M.)	(a)	Port Wakefield (D.C.)	51
Eudunda (D.C.)	51	Prospect (M.)	(a)
Franklin Harbour (D.C.)	52	Quorn (M.)	52
Freeling (D.C.)	51	Redhill (D.C.)	52
Gawler (M.)	51	Renmark (M.)	53
Georgetown (D.C.)	52	Renmark Irrigation Trust (D.C.)	53
Gladstone (D.C.)	52	Riverton (D.C.)	51
Glenelg (M.)	(a)	Robe (D.C.)	52
Gumeracha (D.C.)	51	Robertstown (D.C.)	51
Hallett (D.C.)	52	Saddleworth (D.C.)	51
Hawker (D.C.)	52	Salisbury (D.C.)	51
Henley and Grange (M.)	(a)	Snowtown (D.C.)	52
Hindmarsh (M.)	(a)	Spalding (D.C.)	52
Jamestown (D.C.)	52	St. Peters (M.)	(a)
Jamestown (M.)	51	Stirling (D.C.)	51
Kadina (D.C.)	52	Strathalbyn (D.C.)	51
Kadina (M.)	51	Strathalbyn (M.)	51
Kanyaka (D.C.)	52	Streaky Bay (D.C.)	52
Kapunda (D.C.)	51	Tantanoola (D.C.)	52
Kapunda (M.)	51	Tanunda (D.C.)	51
Karoonda (D.C.)	53	Tatiara (D.C.)	52
Kensington and Norwood (M.)	(a)	Teatree Gully (D.C.)	51
Keyneton and Swan Reach (D.C.)	51	Thebarton (M.)	(a)
Kimba (D.C.)	52	Truro (D.C.)	51
Kingscote (D.C.)	51	Tumby Bay (D.C.)	52
Lacepede (D.C.)	52	Unley (M.)	(a)
Lameroo (D.C.)	53	Upper Wakefield (D.C.)	52
Laura (D.C.)	52	Victor Harbour (M.)	51
Le Hunte (D.C.)	52	Waikerie (D.C.)	53
Lincoln (D.C.)	52	Walkerville (M.)	(a)
Loxton (D.C.)	53	Walleroo (M.)	51
Lucindale (D.C.)	52	Warooka (D.C.)	51
Maitland (M.)	51	West Torrens (M.)	(a)
Mallala (D.C.)	51	Whyalla Town Commission (M.)	52
Mannum (D.C.)	53	Willunga (D.C.)	51
Marion (M.)	(a)	Wilmington (D.C.)	52
Marne (D.C.)	53	Woodville (M.)	(a)
Meadows (D.C.)	51	Yankalilla (D.C.)	51
Meningie (D.C.)	53	Yorke Peninsula (D.C.)	51
Millicent (D.C.)	52	Yorke Peninsula (D.C.)	51
Minlaton (D.C.)	51	Not Incorporated—Lower North	52
Mitcham (M.)	(a)	Not Incorporated—Murray-Mallee	53
Mobilong (D.C.)	53	Not Incorporated—South Eastern	52
Moonta (M.)	51	Not Incorporated—Upper North	52
Morgan (D.C.)	53	Not Incorporated—Western	52
Mount Barker (D.C.)	51		
Mount Gambier (D.C.)	52		

(a) Included with Adelaide and Suburbs.

CENSUS OF MOTOR VEHICLES.

31st DECEMBER, 1955.

PRICE LIST.

NOTE.—The bulletins listed below are obtainable by purchase from the Government Printer, Canberra.

BULLETIN.	DATE OF ISSUE.	PRICE.		
		EXCLUDING POSTAGE.	INCLUDING POSTAGE.	
			AUSTRALIA AND OTHER BRITISH COUNTRIES.	FOREIGN COUNTRIES.
		s. d.	s. d.	s. d.
No. 3: Queensland.....	Sept., 1957	2 6	2 10	3 0
No. 4: South Australia	Nov., 1957	2 6	2 10	3 0
No. 5: Western Australia	Oct., 1957	2 6	2 10	3 0
No. 6: Tasmania	Aug., 1957	2 6	2 10	3 0
No. 7: Northern Territory and Australian Capital Territory	July, 1957	2 6	3 0	3 2

NOT FOR SALE COPY.*

By Authority: L. G. SHEA, Government Printer, Tasmania.

WHOLLY SET UP AND PRINTED IN AUSTRALIA.

* Copies may be purchased. See inside of cover for Price List.